

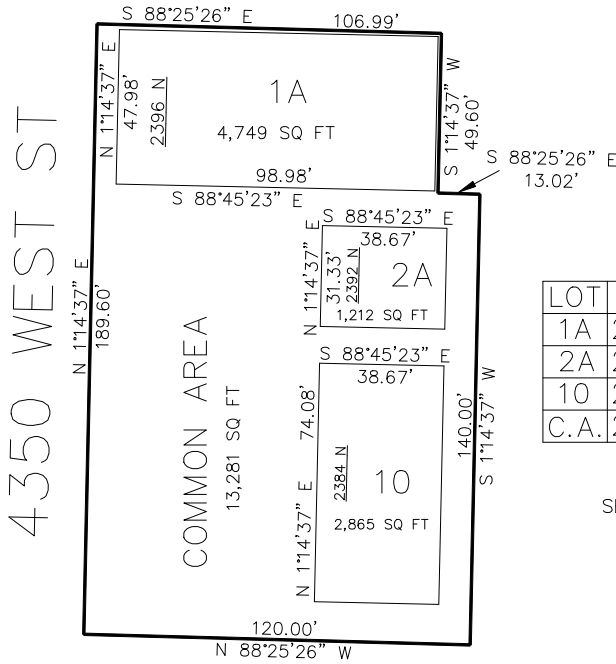
PART OF THE NE.1/4, OF SECTION 32, T.7N., R.2W., S.L.B. & M.
TOWN CENTER BUSINESS PLAZA 1ST AMENDMENT

TAXING UNIT: 21

IN PLAIN CITY
SCALE 1" = 30'

SEE PAGE 31

SEE PAGE 31



LOT	SERIAL #	OWNERSHIP
1A	241630001	CODY RHEES CONST INC
2A	241630002	CODY RHEES CONST INC
10	241630003	AM & PM INVESTMENTS LLC
C.A.	241630004	TOWN CENTER BUSINESS PLAZA POA LLC

SEE PAGE 31

SEE PAGE 31

10' UTILITY & DRAINAGE EASEMENTS EACH
SIDE OF PROPERTY LINES AS INDICATED
BY DASHED LINES EXCEPT AS OTHERWISE
SHOWN.

FOR COMPLETE SURVEY DATA SEE
ORIGINAL DEDICATION PLAT IN
BOOK 96, PAGE 69 OF RECORDS.